

Majestic Machinery, Inc.

Servo Systems



Our servo sets include a servo motor, a servo driver, power and encoder cables.
Custom cable lengths are available upon request.

Selection of drive modes are: Position (pulse and direction), Torque and Speed.

Single and 3 phase are available on most models

Select a motor that is right for you and contact us today for price and delivery.

www.majesticmachinery.com

Series Models

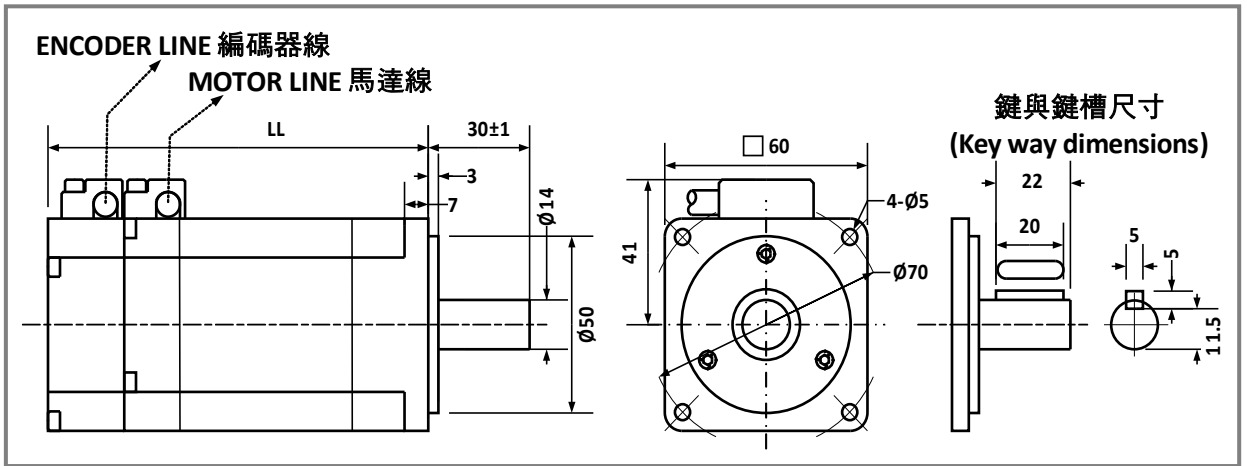
(MH5513-ENN)

| H | 551 | 3 | E |
|---------------|-------------------|-------------------|---------------------------------------|
| Input Voltage | Rated Power | Rated Speed | Encoder |
| | 401: 400w | 3: 3000rpm | E: 2500 Lines ABZ UVW |
| | 551: 550w | 4: 8000rpm | |
| | 751: 750w | 5: 1500rpm | |
| | 851: 850w | 6: 2000rpm | |
| | 102: 1.0Kw | | |
| | 112: 1.1Kw | | |
| | 152: 1.5Kw | | |
| | 202: 2.0Kw | | |
| | 302: 3.0Kw | | |
| | 332: 3.3Kw | | |

Matching a Driver to a Motor

| Servo Driver Model | Servo Motor Model |
|--------------------|--|
| SD-15 | MH2013 , MH4013 |
| SD-20 | MH5513 , MH7513 , MH7516 |
| SD-30 | MH1022 , MH8516 , MH8511 , MH1026 , MH1021 , MH1126 |
| SD-40 | MH1526 |
| SD-50 | MH2026 |
| SD-75 | MH3026 , MH3325 |

60mm Frame [unit: mm]



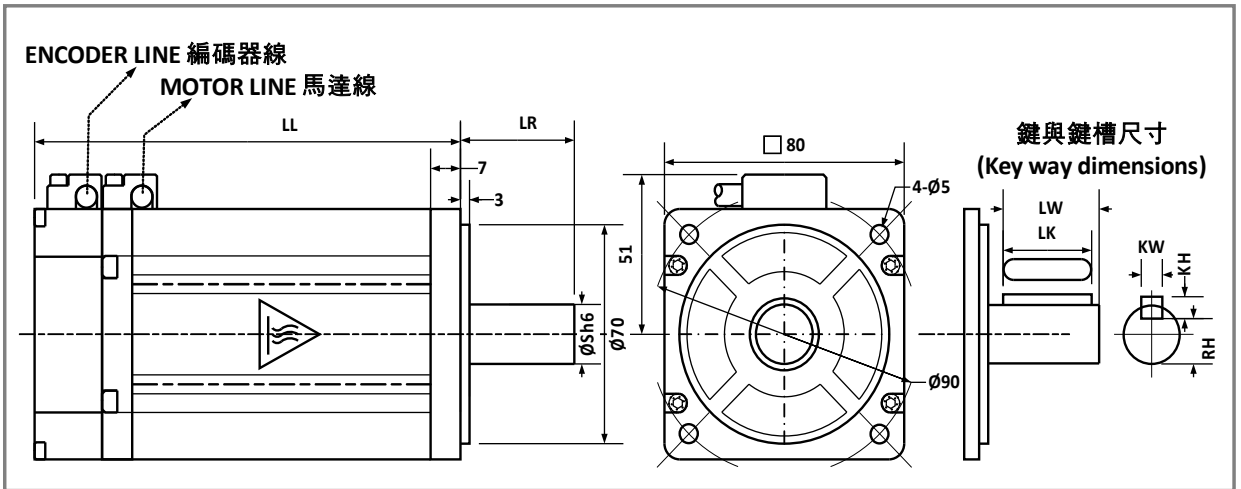
| | ML 1513 | | MH 2013 | | MH 4013 | |
|---------------|-----------------------|--------|-----------------------|--------|-----------------------|--------|
| Motor Output | 150W | | 200W | | 400W | |
| Encoder | -A□□ | -E□□ | -A□□ | -E□□ | -A□□ | -E□□ |
| LL | 116 | 98 | 116 | 98 | 133 | 115 |
| Rotor inertia | 300 g*cm ² | | 300 g*cm ² | | 470 g*cm ² | |
| Weight | 1.3 Kg | 1.1 Kg | 1.3 Kg | 1.1 Kg | 1.8 Kg | 1.6 Kg |
| Input Voltage | DC 24V | | AC 220V | | AC 220V | |
| Motor Speed | 3000 RPM | | 3000 RPM | | 3000 RPM | |
| Rated Torque | 0.48 N*M (4.9 Kg*cm) | | 0.64 N*m (6.5 Kg*cm) | | 1.27 N*m (13 Kg*cm) | |
| Peak Torque | 1.43 N*M (14.6 Kg*cm) | | 1.9 N*m (20 Kg*cm) | | 3.8 N*m (39 Kg*cm) | |
| Encoder Lines | | | E1-A□ | E1-E□ | E1-A□ | E1-E□ |

Code Line

E1-A□ Uses black vinyl coated wiring cover

E1-E□ Uses yellow vinyl coated wiring cover

80mm Frame [unit: mm]



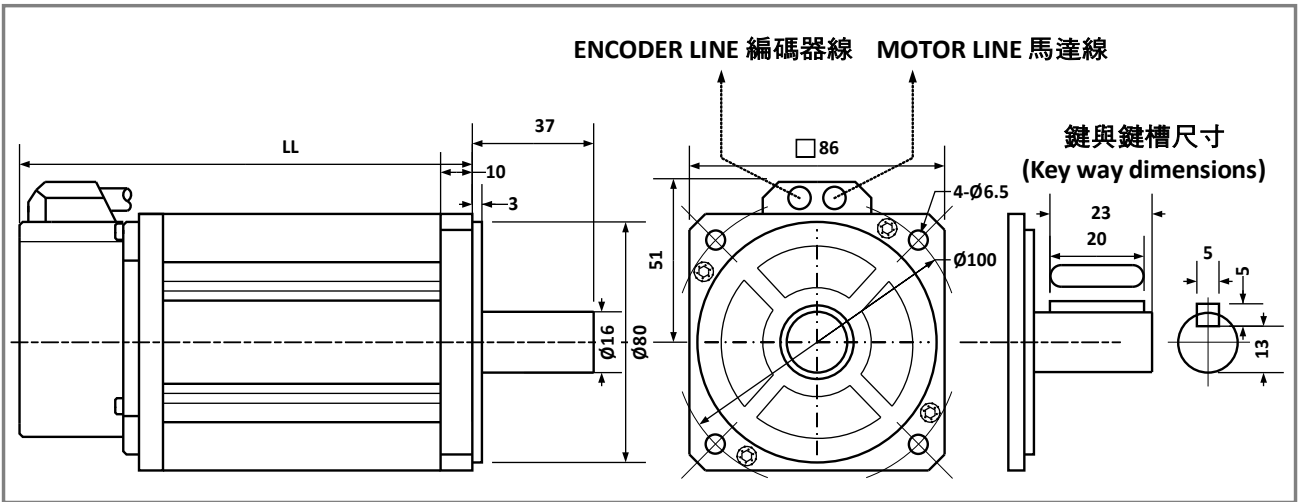
| | MH 5513 | | MH 7513 | |
|---------------|------------------------|--------|------------------------|--------|
| Motor Output | 550W | | 750W | |
| Encoder | -A□□ | -E□□ | -A□□ | -E□□ |
| LW | 22 | | 32 | |
| LK | 20 | | 30 | |
| KW | 5 | | 6 | |
| KH | 5 | | 6 | |
| RH | 13.5 | | 16 | |
| S | 16 | | 19 | |
| LR | 27 | | 37 | |
| LL | 130 | 113 | 156 | 139 |
| Rotor inertia | 1016 g*cm ² | | 1604 g*cm ² | |
| Weight | 2.4 Kg | 2.2 Kg | 3.3 Kg | 3.1 Kg |
| Input Voltage | AC 220V | | AC 220V | |
| Motor Speed | 3000 RPM | | 3000 RPM | |
| Rated Torque | 1.75 N*M (17.9 Kg*cm) | | 2.39 N*m (24.3 Kg*cm) | |
| Peak Torque | 5.3 N*M (54 Kg*cm) | | 7.2 N*m (73 Kg*cm) | |
| Encoder Lines | E1-A□ | E1-E□ | E1-A□ | E1-E□ |

Code Line

E1-A□ Uses black vinyl coated wiring cover

E1-E□ Uses yellow vinyl coated wiring cover

86mm Frame [unit: mm]



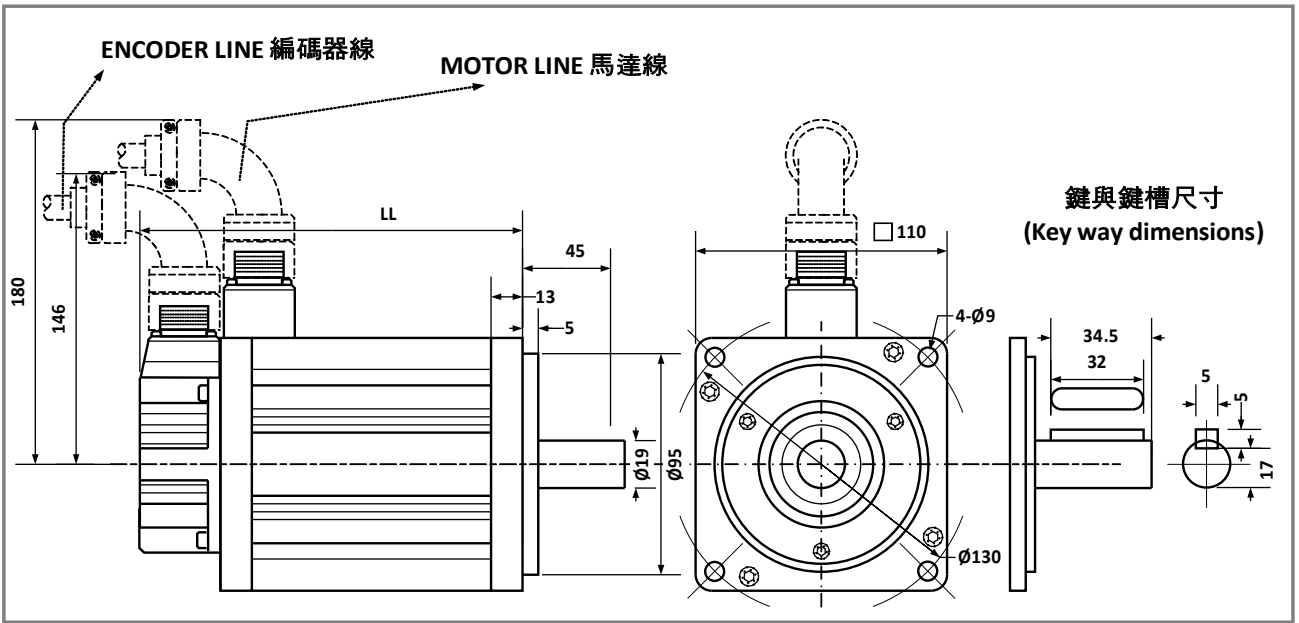
| | MH 7516 | MH 1022 |
|---------------|------------------------|------------------------|
| Motor Output | 750W | 1000W |
| Encoder | -A□□ | -A□□ |
| LL | 171 | 181 |
| Rotor inertia | 3400 g*cm ² | 3700 g*cm ² |
| Weight | 3.8 Kg | 4.1 Kg |
| Input Voltage | AC 220V | AC 220V |
| Motor Speed | 2000 RPM | 2500 RPM |
| Rated Torque | 3.5 N*M (36 Kg*cm) | 3.8 N*m (39 Kg*cm) |
| Peak Torque | 10.5 N*M (109 Kg*cm) | 11.5 N*m (117 Kg*cm) |
| Encoder Lines | E1-A□ | E1-A□ |

Code Line

E1-A□ Uses black vinyl coated wiring cover

E1-E□ Uses yellow vinyl coated wiring cover

110mm Frame [unit: mm]



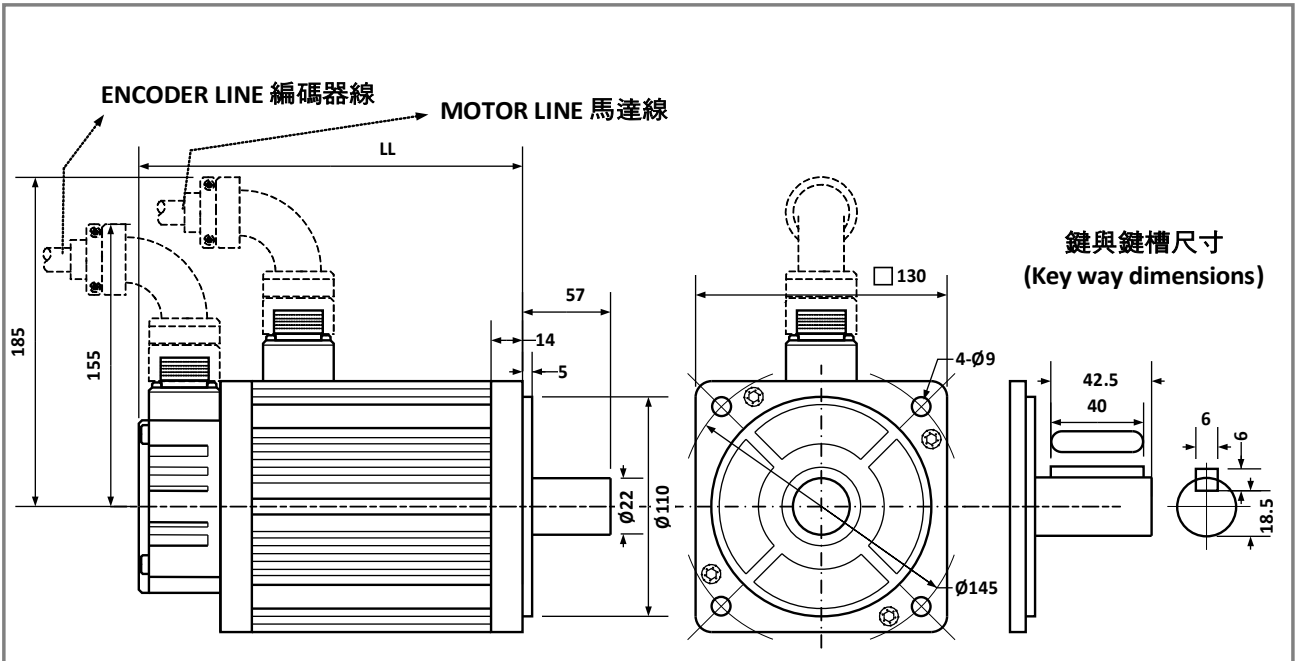
| | MH 8516 | MH 8511 | MH 1026 | MH 1021 |
|---------------|--------------------------|--------------------------|--------------------------|--------------------------|
| Motor Output | 850W | 850W | 1000W | 1000W |
| Encoder | -A□□ | -A□□ | -A□□ | -A□□ |
| LL | 161 | 161 | 177 | 177 |
| Rotor inertia | 4167 g*cm ² | 4167 g*cm ² | 6127 g*cm ² | 6127 g*cm ² |
| Weight | 5.5 Kg | 5.5 Kg | 6.1 Kg | 6.1 Kg |
| Input Voltage | AC 220V | AC 220V | AC 220V | AC 220V |
| Motor Speed | 2000 RPM | 1600 RPM | 2000 RPM | 1600 RPM |
| Rated Torque | 4.06 N*M (41.4 Kg*cm) | 5.07 N*M (51.7 Kg*cm) | 4.77 N*M (48.6 Kg*cm) | 5.97 N*M (60.9 Kg*cm) |
| Peak Torque | 12.2 N*M (124 Kg*cm) | 15.2 N*M (155 Kg*cm) | 14.3 N*M (146 Kg*cm) | 17.9 N*M (183 Kg*cm) |
| Encoder Lines | EL1-A□ | EL1-A□ | EL1-A□ | EL1-A□ |

Code Line

E1-A□ Uses black vinyl coated wiring cover

E1-E□ Uses yellow vinyl coated wiring cover

130mm Frame [unit: mm]



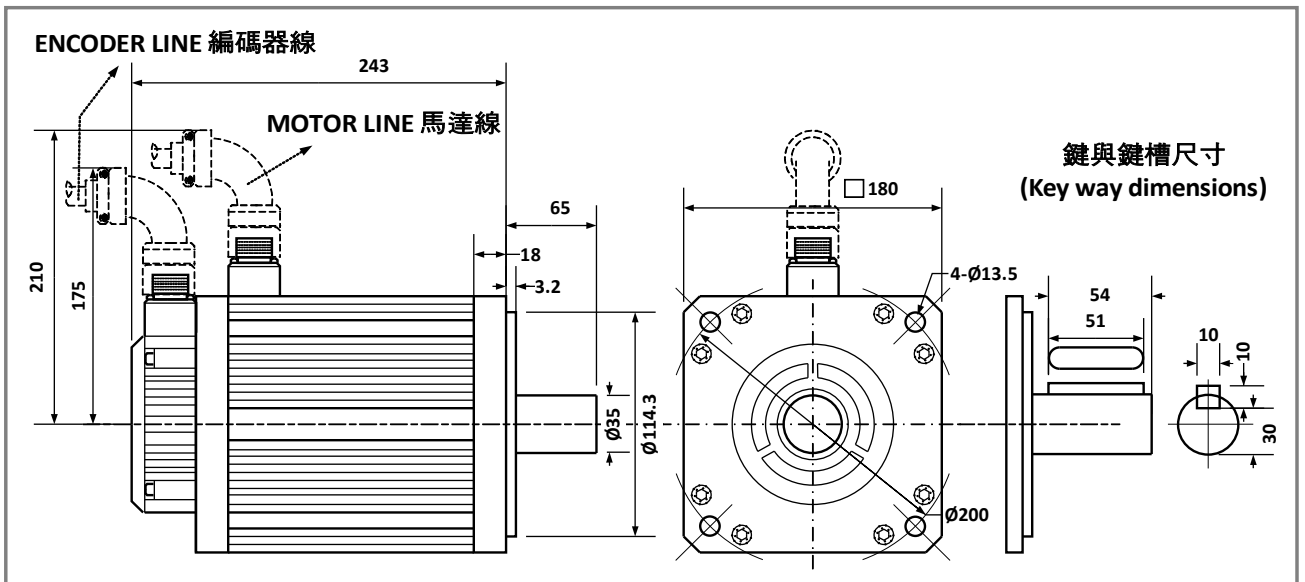
| | MH 1126 | MH 1526 | MH 2026 | MH 3026 |
|---------------|--------------------------|-------------------------|-------------------------|-------------------------|
| Motor Output | 1100W | 1500W | 2000W | 3000W |
| Encoder | -A□□ | -A□□ | -A□□ | -A□□ |
| LL | 179 | 192 | 209 | 231 |
| Rotor inertia | 12600 g*cm ² | 15300 g*cm ² | 19400 g*cm ² | 27700 g*cm ² |
| Weight | 7.6 Kg | 9 Kg | 9.8 Kg | 11.6 Kg |
| Input Voltage | AC 220V | AC 220V | AC 220V | AC 220V |
| Motor Speed | 2000 RPM | 2000 RPM | 2000 RPM | 2000 RPM |
| Rated Torque | 5.25 N*M (53.5 Kg*cm) | 7.16 N*M (73 Kg*cm) | 9.55 N*M (97 Kg*cm) | 14.3 N*m (146 Kg*cm) |
| Peak Torque | 15.8 N*M (160 Kg*cm) | 21.5 N*M (219 Kg*cm) | 25 N*M (255 Kg*cm) | 30 N*m (306 Kg*cm) |
| Encoder Lines | EL1-A□ | EL1-A□ | EL1-A□ | EL1-A□ |

Code Line

E1-A□ Uses black vinyl coated wiring cover

E1-E□ Uses yellow vinyl coated wiring cover

180mm Frame [unit: mm]

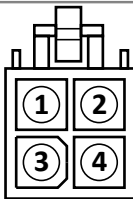


MH 3225

| | |
|---------------|--|
| Motor Output | 3300W |
| Encoder | -A <input type="checkbox"/> <input type="checkbox"/> |
| Rotor inertia | 47000 g*cm ² |
| Weight | 21.8 Kg |
| Input Voltage | AC 220V |
| Motor Speed | 1500 RPM |
| Rated Torque | 21 N*m (214 Kg*cm) |
| Peak Torque | 53 N*m (540 Kg*cm) |
| Encoder Lines | EL1-A <input type="checkbox"/> |

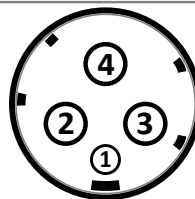
Power Cables

Square 4 Pin Power cable



| Pin | Desc. |
|----------|-------|
| 1 | U |
| 2 | V |
| 3 | W |
| 4 | FG/PE |

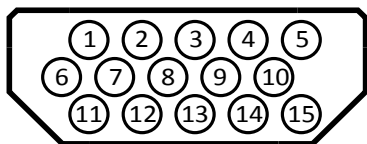
Round 4 Pin Power cable



| Pin | Desc. |
|----------|-------|
| 1 | FG/PE |
| 2 | U |
| 3 | V |
| 4 | W |

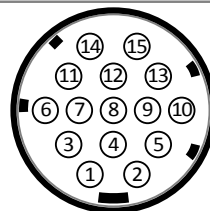
Encoder Cables

15 pin Encoder Cable



| Pin | -A□□ | -E□□ |
|---------------|-------|-------|
| 1 | A+ | A+ |
| 2 | A- | A- |
| 3 | +5v | +5v |
| 4 | U- | NC |
| 5 | U+ | U |
| 6 | B+ | B+ |
| 7 | B- | B- |
| 8 | NC | NC |
| 9 | V- | NC |
| 10 | V+ | V |
| 11 | Z+ | Z+ |
| 12 | Z- | Z- |
| 13 | 0v | 0v |
| 14 | W- | NC |
| 15 | W+ | W+ |
| Shield | PE/FG | PE/FG |

Round Encoder Cable



| Pin | Desc. |
|---------------|-------|
| 1 | PE/FG |
| 2 | +5v |
| 3 | 0v |
| 4 | A+ |
| 5 | B+ |
| 6 | Z+ |
| 7 | A- |
| 8 | B- |
| 9 | Z- |
| 10 | U+ |
| 11 | V+ |
| 12 | W+ |
| 13 | U- |
| 14 | V- |
| 15 | W- |
| Shield | PE/FG |